

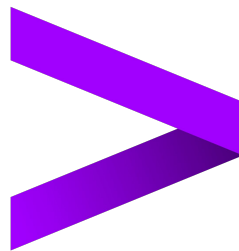
SHPE x Accenture

Fall 2024 Kickoff
Bienvenidos!

Please check-in!



x





SHPE

Leading Hispanics in STEM®

Please check-in!



Agenda

01.

**Get to Know Us -
Mission and Exec**

02.

**How you can get
involved?**

04.

Upcoming Events

05.

Accenture <3



01

What is SHPE?

SHPE National Mission:

SHPE changes lives by empowering the Hispanic/Latine community to realize its fullest potential and to impact the world through STEM awareness, access, support, and development.

Please check-in!



Please check-in!



SHPE at Northwestern



**Barrier Free
Organization**



**Professional
Development**



**Community
Building**

- **80+ Active Members – From all majors and years**
Engineering, Computer Science, Other (20% non-STEM)
- **Companies our members have worked for:**



accenture



Bank of America



CATERPILLAR®



Microsoft



LOCKHEED MARTIN



RIVIAN



Meet ur Exec - What we do...

*Senior
Civil
Engineering*



Kassie Ramirez
(she/her)

President

Fun Fact - i like doing
sudoku and jigsaw
puzzles!



Natasha González
(she/her)

Vice President

Fun Fact - I skydived for
the first time this
summer! 🪂

*Senior
Computer
Science*



Please check-in!

Meet Our Exec

*Senior
Communication
studies*



**Pedro Martinez
(He/Him)**

**Professional Liaison +
Interim VP**

Fun Fact - I had a strawberry
birthmark on my face



**Ricardo Olmos
(He/Him)**

Treasurer

Fun Fact - I fell asleep on
the Metra and ended up
in Wisconsin

Please check-in!



*Junior
Mechanical
Engineering*

Meet Our Exec

*Junior
Computer
Science*



Eduardo Ramos
(he/him)

Secretary

Fun Fact - I watched
Azealia Banks live & 212!!!



Bruce Garcia
(he/him)

Finance

Fun Fact - Owner of 5
cats

*Sophomore
Computer
Science*



Please check-in!

Meet Our Exec

*Junior
Civil
Engineering*



Evelyn Molina
(she/her)

Chapter Liaison

Fun Fact - My favorite art period is the Baroque.



Luiza Kroeff
(she/her)

Chapter Liaison

Fun Fact - I have a scuba diving license!

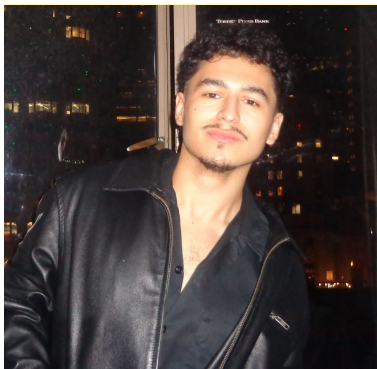
*Sophomore
Biomedical
Engineering*



Please check-in!

Meet Our Exec

*Senior
Computer
Science*



Mahmood Sadeghi
(he/him)

Community Outreach

Fun Fact - I met RuPaul
this summer



Isabella Socci
(she/her)

Community Outreach

Fun Fact - I've been to all
4 corners of the U.S. in
the past month

*Sophomore
Computer
Science*



Please check-in!

Meet Our Exec

*Sophomore
Civil
Engineering*



Gisela Martinez
(she/her)

MemberSHPE

Fun Fact - I take care of
two stray dogs and two
stray cats when i'm back
home :)

*Sophomore
Mechanical
Engineering*



Sofia Flores
(she/her)

MemberSHPE

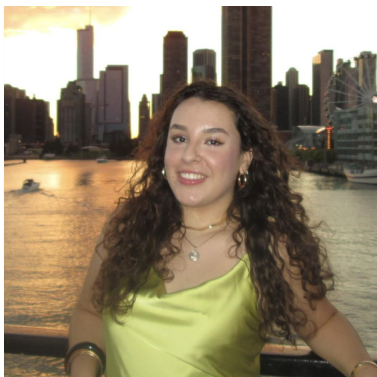
Fun Fact - I've biked from
NU to Wisconsin

Please check-in!



Meet Our Exec

*Junior
MatSci
Engineering*



**Mariana Lopez
(she/her)**

SHPEtina Chair

Fun Fact - I volunteer at
the Chicago NASCAR
Race



**Mia Jeremiah &
Gabi Pedrazzani**

SHPEtina Committee

Fun Fact - We've both
never broken a bone

*Juniors
MechE
&
IE +
International
Studies*



Please check-in!

Meet Our Exec

*Sophomore
Computer
Science*



Ariel García
(he/him)

Webmaster

Fun Fact - I saw 6
different artists live over
the summer!



Emily Trujillo
(she/her)

Social Media/Marketing

Fun Fact - I love trying
out new coffee shops

*Junior
Computer
Science*



Please check-in!



Membership Point System

Why are you implementing this?

- Tracks our active membership → share accurate information to our company sponsors

What do I gain?

- Recognition for participation/engagement
- Higher chance of getting accepted to be funded to Nationals

How can you track my participation?

- Fill out the member form!
 - Fill out check in/check out forms
- 



Member Form

Who needs to fill it out?

- Everyone!!! → anyone who wants their membership points to be tracked

Even if you have filled out other forms in the past and have been apart of our chapter previous years you still need to fill it out!

Fill out the form!!



How Can You Get Involved?

1. Email exec members to join committees!
2. Freshman Round Table
3. MentorSHPE
4. If you have an idea let us know! Tell someone on exec!



Freshman Round Table (FRT)



Gain experience

Learn about SHPE exec's
inner workings



Plan events

Work with other first
years to plan own events



Community Bonding

Connect with the
freshmen in SHPE





MentorSHPE

Gain Academic and Professional Development with SHPE!

- Be supported 1-on-1 with an upperclassmen
- Professional and interpersonal development
- Gain knowledge and insight on securing internships, full opportunities, and graduate school opportunities
- Join a community that is focused on supporting and uplifting each other!



^^ sign up ^^
form

Community Outreach - *Volunteering Opportunity*

What we do...

- SHPE Jr - Local high school collaborations
- Community Service Events

Join our committee!

mahmoodsadeghi2025@u.northwestern.edu
soccii@u.northwestern.edu

VOLUNTEER FOR HSIP IN NOVEMBER!

Suuuper cool event for local
high schoolers held on NU
campus!! Timing is flexible :))



ANNOUNCEMENTS - Save the date

Networking Event (IIT x UIC x NU)

Nationals/Career Prep
Only 18 spots left!



Oct 4

**Parkes Hall
@5:30pm**

SEO x SHPE Event

Career Prep

Oct 9

**Tech M152
@5:30pm**

Grad Info Session (NSBE X SHPE)

Grad School Prep

Oct 11

**Ford ITW
@5:30pm**

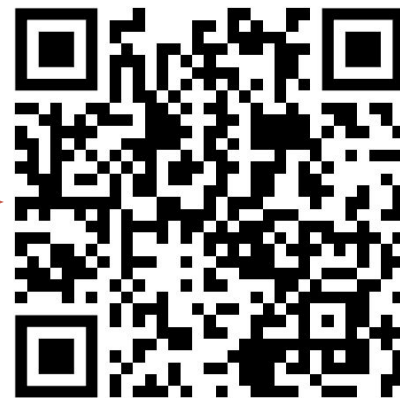
Connect with us!



Group Me



LinkedIn



Interest Form
for Listserv



Instagram:
@shpe_nu



accenture

<3333

Check Out Form

Gracias Por Venir!

Please check-out!



x

